



# MONTHLY MEMBERSHIP PROGRESS REPORT

District 9 MC

Results as of: 05/31/2019

GMT: OPEN

LOCATION IOWA

GMT CA

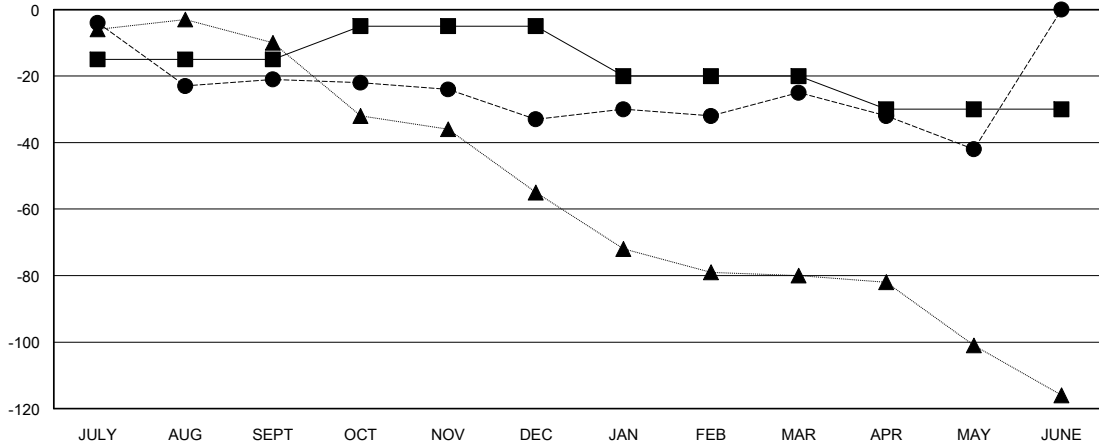
Clubs			
RESULTS FOR 2018-2019			
QUARTER	NEW CLUB GOAL	NEW CLUBS	DROPPED CLUBS
JULY/AUG/SEPT	0	0	1
OCT/NOV/DEC	1	0	0
JAN/FEB/MAR	0	0	0
APR/MAY/JUNE	0	0	1

Members			
RESULTS FOR 2018-2019			
QUARTER	MEMBER GROWTH NET GOAL	MEMBER GROWTH ACTUAL	DROPPED MEMBERS ACTUAL (including transfers)
JULY/AUG/SEPT	-15	21	40
OCT/NOV/DEC	10	27	36
JAN/FEB/MAR	-15	24	12
APR/MAY/JUNE	-10	7	22

GOALS AND ACTUAL NEW CLUBS CUMULATIVE



GOALS AND ACTUAL MEMBERS CUMULATIVE



DROPPED CLUBS: 2	24 CLUBS OF 45 ADDED 1 OR MORE NEW MEMBERS	<u>GENDER DISTRIBUTION</u> MALE 763 (76.84%) FEMALE 230 (23.16%) Women Percentage Fiscal Year Goal: 23%
<u>DROPPED MEMBERS</u> DECEASED 16 CLUB CANCELLED 15 OTHER 79 TOTAL 110	<a href="#">CLICK HERE FOR CUMULATIVE MEMBERSHIP DATA</a>	TOTAL FAMILY UNIT MEMBERS 231 FAMILY MEMBERS PAYING HALF DUES 118